



University of Florida Transportation Institute

Florida Transportation Technology Transfer (T2) Center

UNIVERSITY of FLORIDA

The Florida Transportation Technology Transfer Center

2014

Professional Training Portfolio

Turn to page 22 for the Florida Technology Transfer Quarterly

The Florida T2 Center is your partner in providing your professional training needs. Training delivery methods include instructor-led, recorded, and online options, as well as our broadcast option. This comprehensive portfolio outlines the extensive training opportunities offered, all of which can be tailored to meet your specific needs. Most courses offer Professional Development Hours (PDHs) and/or Continuing Education Units (CEUs). You and your employees will benefit from the technical and managerial information presented in these courses.

The Florida T2 Center conducts required and elective training to improve and strengthen the skills of your entire organization. Courses can be presented to participants live or by broadcast and some are available online. Call us today at 352.273.1685 for a T2 Center representative and 352.273.1661 for a CTQP training representative.

Training Index

- ADA – Facilities Access **5**
- ADA/Accessibility Requirements for Highway Design and Pedestrians **5**
- Aggregate Base Testing Technician – ACI **5**
- Aggregate Testing Technician Level 1 – ACI **5**
- Aggregate Testing Technician Level 2 – ACI **5**
- Asphalt Combo – Inspection and Maintenance **6**
- Asphalt Inspection **6**
- Asphalt Mix Design – CTQP **6**
- Asphalt Pavement Maintenance **6**
- Asphalt Paving Basics for Florida Cities and Counties **6**
- Asphalt Paving Level 1 – CTQP **6**
- Asphalt Paving Level 2 – CTQP **6**
- Asphalt Plant Level 1 – CTQP **6**
- Asphalt Plant Level 2 – CTQP **7**
- Associate Concrete Transportation Construction Inspector – ACI **9**
- Backhoe – Safety/Hands-on **12**
- Basics of a Good Road **10**
- Between You and Me: Managing Conflict at Work **18**
- Bridge Maintenance **8**
- Bucket Truck – Safety/Hands-on **12**
- Building and Facility Maintenance Safety **16**
- Chainsaw Safety **8**
- Chainsaw Safety in Disaster Recovery **8**
- Chainsaw Safety/Hands-on **8**
- Chemical Spill Prevention, Control & Countermeasures **16**
- Coaching for Success **18**
- Common Sense Solutions for Intersection Safety Problems **16**
- Communicate Assertively **18**
- Communication Confidence **18**
- Community Approach to Safe Routes to School Programs **16**
- Community Bicycle and Pedestrian Safety Programs **8**
- Concrete Batch Plant Operator CTQP **9**
- Concrete Field Testing Technician Grade 1 – ACI **9**
- Concrete Laboratory Testing Technician Level 1 – ACI **9**
- Concrete Laboratory Testing Technician Level 2 – ACI **9**
- Concrete Strength Testing Technician – ACI **9**
- Concrete Transportation Construction Inspector – ACI **9**
- Confined Space Entry Certification **16**
- Construction Estimating **14**
- Crane Truck Safety: New Operator Orientation and Experienced Operator Hazard Analysis **4**
- Creating Possibilities **19**
- Defensive Driving Skills and Crash Prevention for Heavy Vehicle Operation **16**
- Discover the Leader in You **19**
- Drilled Shaft Inspection – CTQP **11**
- Earthwork Construction Inspection Level 1 – CTQP **10**
- Earthwork Construction Inspection Level 2 – CTQP **11**
- Economic Evaluation of Public Projects **15**
- Empowerment: Unleash Potential **19**
- FDOT Concrete Field Inspector Specification – CTQP **9**
- FDOT Specifications **15**
- Final Estimates Level 1 – CTQP **15**
- Final Estimates Level 2 – CTQP **15**
- Fleet Maintenance Safety **16**
- Forklift-Powered Industrial Truck – Safety/Hands-on **12**
- From Manager to Motivator **19**
- Front-end Loader – Safety/Hands-on **12**
- Geotechnical Engineering for Non-Geotechnical Engineers – The Basics **11**
- Gradall Hands-on **12**
- Highway Capacity and Traffic Impact Analysis **4**
- Highway Safety Manual Practitioners Guide for Geometric Design Features **10**
- Hot-Mix Asphalt Pavement Evaluation, Preservation, and Rehabilitation **7**
- Inspecting Municipal Properties **15**
- Integrating Pavement Preservation Practices and Pavement Management **7**
- Intersection Capacity Analysis **4**
- Introduction to Highway Construction Inspection **15**
- Leading the Challenge of Change **19**
- League Cycling Instructor (LCI) Training (League of American Cyclists) **8**
- Limerock Bearing Ratio (LBR) Technician – CTQP **5**
- Lockout/Tagout: Isolation and Control of Hazardous Energy at Municipal Work Places **17**
- Long-Term Pavement Performance (LTPP) – Pavement Distress Identification **7**
- Low-Cost Safety Improvements for Rural Roads **17**
- Maintenance of Traffic – Advanced **13**
- Maintenance of Traffic – Advanced Refresher **13**
- Maintenance of Traffic – Basic **13**
- Maintenance of Traffic – Intermediate **13**
- Maintenance of Traffic – Intermediate Refresher **13**
- Making Meetings Work **19**
- Mobile Equipment and Internal Work Zone Safety **14**
- Mobile Video Training **21**
- Motor Grader Operator – Safety/Hands-on **13**
- Now Hear This **20**

Nuclear Density Gauge HazMat (requalification) **11**
 Nuclear Density Gauge Safety (including HazMat) **11**
 OSHA-Competent Person **17**
 Pile Driving Inspection — CTQP **11**
 Pilot/Escort Flagging **14**
 Pilot/Escort Flagging Refresher **14**
 Pilot/Escort Flagging Refresher Online **14**
 Plans Reading Fundamentals **4**
 Power Line Safety for the Municipal Worker **17**
 Power of Feedback **20**
 Powerful Public Speaking **20**
 Project Manager/Inspector Fundamentals **15**
 Qualified Aggregate Sampler — CTQP **5**
 Quality Control Manager — CTQP **15**
 Quality Customer Service **20**
 Relationship Strategies **20**
 Road Safety 365: A Workshop for Local Governments **17**
 Road Safety Audits for Community Traffic Safety Teams **17**
 Road Safety Audits for Local Governments **17**
 Roadside Maintenance Safety **18**
 Safety Edge **7**

Stormwater, Erosion, and Sedimentation Certification Program (NPDES) **18**
 Successful Supervision in Public Works **20**
 Surveying Methods for Local Agencies **18**
 Surviving the Challenge of the Problem Employee **20**
 Teamwork: Together Everyone Wins **20**
 Tractor Mower Operator Safety **13**
 Traffic Engineering Fundamentals **10**
 Transportation Site Impact and Trip Generation **10**
 Transportation Site Impact with Highway Capacity Analysis **4**
 Trenching and Excavation Safety — OSHA Standard **4**
 What to Do First When Everything is Important **20**



New Logo! See Page 23 to find out what it means for you.

Sponsors, Partnerships, and Training Locations

Florida T2 Center training opportunities are supported in part through grants and partnerships with various offices of the Florida Department of Transportation (FDOT) and the Federal Highway Administration (FHWA). Courses are offered as part of the Local Technical Assistance Program (LTAP). Many courses can lead to qualifications through FDOT's Construction Training Qualification Program (CTQP), the Maintenance of Traffic (MOT) training program, and the Pilot/Escort training program.

The Florida T2 Center courses are conducted at convenient locations throughout the state, some are broadcast live to accommodate a wider audience, and others are available online or as recordings. Most Florida T2 Center training can also be arranged exclusively for your organization at your location, saving you time and money. Check our website t2ctt.ce.ufl.edu for current training schedules and locations. Our T2 Mobile Video Training (MVT) sessions are held at the requesting agency's preferred location. See page 21 for MVT scheduling details and information.

Registration fees included in this portfolio are for live, instructor-led courses and online courses, as noted. The Florida T2 Center can also offer broadcasting of selected live, instructor-led courses to provide even more training options and savings! Check our website for full course schedules or call us at 352.273.1661 for a CTQP training representative and 352.273.1685 for a T2 Center training representative.

Free Training from NHI and TCCC!

Many free, Web-based courses are available from the National Highway Institute (NHI) in partnership with the Transportation Curriculum Coordination Council (TCCC). NHI regularly develops new courses and updates older courses to serve the transportation industry. Please visit nhi.fhwa.dot.gov regularly to view the entire list of updated, new, and regular courses.

Highways for LIFE has partnered with NHI to present NHI Innovations, which is a monthly Web conference series that is free to participants. Visit nhi.fhwa.dot.gov/about/innovationseries.aspx to view and/

or register for upcoming conference listings or to listen to or download previous presentations. NHI also offers Real Solutions, a free monthly series which features speakers discussing problems or issues they have faced in the field and what steps they took to solve them. Participants can ask questions and receive answers. Go to nhi.fhwa.dot.gov/about/realsolutions.aspx to view recorded presentations, titles, and dates of upcoming events, or to sign up for email notifications.

Training Notifications

Sign up for emails containing current course announcements. Contact David Page at dkpage@ufl.edu to have your name added.

Looking for savings on your CTQP Training?

Special Discount! Individual Written Exams taken in our Gainesville Business Office are only \$150 per exam!

Call 352.273.1669 or visit t2ctt.ce.ufl.edu today to schedule your exam and save money!

New Courses for 2014

The Florida T2 Center is excited to announce two new design courses in this year's training portfolio! We have also added courses to the Heavy Equipment, Maintenance of Traffic, Project Management, and Safety categories. Read on for more information.

Crane Truck Safety: New Operator Orientation and Experienced Operator Hazard Analysis

Target Audience: New and experienced operator on your equipment at your facility

This course covers basic crane operator safety and provides an overview of OSHA and other regulatory standards. Trainees will also learn safe procedures in a variety of situations, such as positioning and machine set-up, barricade and work zone perimeter establishment, lift planning, and accurate load weight assessment. The course provides participants with important awareness of hazardous conditions such as power lines, incline, wind effects, shock loading, tie-offs, and snagging. After covering an extensive list of additional considerations for crane truck operators, the course concludes with practical application of these methods in virtual case studies.

\$125 Public • \$175 Private

6 hrs

Call 352.273.1685 for more information

Highway Capacity and Traffic Impact Analysis

Target Audience: Engineers and planners from city, county, and state agencies; consultants and others involved in traffic impact analyses for the design and approval of new land developments, including the modification of existing facilities

This two-day course provides trainees with knowledge of the software applications involved with conducting a typical traffic impact analysis to ascertain the effects of a proposed development on the adjacent roadways and intersections toward the definition of the appropriate mitigating improvements required.

\$200 Public • \$245 Private

8 hrs

Call 352.273.1685 for more information

Intersection Capacity Analysis

Target Audience: Engineers and planners from city, county, and state agencies; consultants and others involved in intersection traffic analysis

This one-day training course provides lectures and workshops on the application of the Highway Capacity Manual (HCM 2010) procedures and use of the Highway Capacity Software (HCS 2010) for the operational analysis of intersections. The procedures are covered in detailed presentations following the HCM 2010 methodologies, including the supplemental information as appropriate.

\$200 Public • \$250 Private

7 hrs

Call 352.273.1685 for more info

CEU/PDH 0.7/7

Plans Reading Fundamentals

Target Audience: Managers and inspectors from city, county, and state agencies; consultants and others involved

in transportation

Highway plans are developed in order to provide a pictorial view of the existing facilities and proposed improvements on a particular portion of roadway. Many highway plan sets have sections on roadway items, erosion control, drainage, pavement, maintenance of traffic, traffic control, lighting, landscaping, and right of way. Contractors, as well as various subcontractors, all utilize construction plans in order to construct the project itself. Estimators use construction plans to assign a reasonable cost associated with the work required to complete the project. The plan set itself serves as a public record showing the documented centerline of a roadway and all associated information. Construction plans are a very important part of the project development process as a whole.

\$150 Public • \$225 Private

7 hrs

Call 352.273.1685 for more info

CEU/PDH 0.7/7

Transportation Site Impact with Highway Capacity Analysis

Target Audience: Engineers and planners from city, county, and state agencies; consultants and others involved in traffic impact analyses for the design and approval of new land developments, including the modification of existing facilities

This two-day course covers the procedures necessary for performing this analysis and defining deficiencies in future operations. Trainees will learn details of general highway capacity principles, and specific Highway Capacity Manual (HCM 2010) methodologies for signalized and unsignalized intersections will be covered in some detail. Participants will apply the Highway Capacity Software (HCS 2010) to illustrate examples for each Manual on Uniform Traffic Control Devices (MUTCD) procedure. Trainees must bring a laptop to participate in these demonstrations, preferably pre-loaded with the latest HCS 2010 if possible.

\$275 Public • \$375 Private

14 hrs

Call 352.273.1685 for more information

Trenching and Excavation Safety — OSHA Standard

Target Audience: Public Works distribution/collection employees who regularly excavate around water, waste water, and re-use systems; storm water, streets/roads, parks or other department employees who set sign posts, dig irrigation trenches, maintain storm swales, plant new trees, etc.; facility managers, in-house trainers, mid-level managers, and safety officers

Cave-ins are perhaps the most feared trenching hazard. But other potentially fatal hazards exist, including asphyxiation due to lack of oxygen in a confined space, inhalation of toxic fumes, drowning, etc. Electrocution or

explosions can occur when workers contact underground utilities.

This workshop addresses trenching and excavation hazards in specific standards for the general industry. It is ideal for new or experienced excavators and members of their crew. The program is designed to be a comprehensive introduction to (or re-emphasis of) the hazards of excavating, "competent person" skills, safe work practices and proper procedure when digging.

\$125 Public • \$210 Private

8 hrs

Call 352.273.1685 for more information

ADA

ADA/Accessibility Requirements for Highway Design and Pedestrians

Target Audience: Designers, ADA coordinators, safety inspectors, project managers, technicians, and consultants

Learn the Americans with Disabilities Act (ADA) requirements for public agencies regarding design, construction, operation, and maintenance of pedestrian facilities within public right-of-way. The course covers extensive technical and regulatory ground, ranging from ADA/accessibility requirements, design, standards, and good practices, to ADA self-evaluations and transition plans.

\$145 Public • \$240 Private

7 hrs

Call 352.273.1685 for more info

CEU/PDH 0.7/7

ADA – Facilities Access

Target Audience: Facility designers, ADA coordinators, safety inspectors, project managers, technicians, and consultants

This course is an overview of the Americans with Disabilities Act (ADA) and the Florida Accessibility Code and revisions. Discussions include regulation impact on agency personnel and project staff responsibilities, building/roadway accessibility design standards/procedures, and Titles II and III ADAAG requirements.

\$145 Public • \$240 Private

7 hrs

Call 352.273.1685 for more info

CEU/PDH 0.7/7

Aggregates

Aggregate Base Testing Technician ACI

Target Audience: FDOT employees who perform acceptance tests to verify aggregate material quality

This American Concrete Institute (ACI) course includes information about and demonstrations of how to properly perform, record, and report the results of basic field and laboratory procedures for aggregates and soils used in road base construction.

Course with written and proficiency exams: 24 hrs

Call 352.273.1661 for pricing

Aggregate Testing Technician Level 1 ACI

Target Audience: FDOT employees who perform acceptance tests to verify aggregate material quality

This ACI course includes information about and demonstrations of how to properly perform, record, and report the results of basic field and laboratory procedures for aggregates and soils used for the production of hot-mix asphalt and ready-mix concrete.

Course with written and proficiency exams: 24 hrs

Call 352.273.1661 for pricing

Aggregate Testing Technician Level 2 ACI

Target Audience: FDOT employees who perform acceptance tests to verify aggregate material quality and who currently hold the ACI Aggregate Testing Technician Level 1 certification

This ACI course includes additional methods and procedures on how to properly perform, record, and report the results of field and laboratory procedures for aggregates and soils used for the production of hot-mix asphalt and ready-mix concrete.

Course with written and proficiency exams: 24 hrs

Call 352.273.1661 for pricing

Limerock Bearing Ratio (LBR) Technician CTQP

Target Audience: FDOT and contractor technicians who perform acceptance tests to verify aggregate material quality

Become more knowledgeable and proficient in testing and inspecting materials used for embankment, subgrade, and road base construction.

Course with written and proficiency exams: 16 hrs

\$450

PDH 8

Call 352.273.1661 for more information

Qualified Aggregate Sampler CTQP

Target Audience: All employees responsible for sampling aggregates for acceptance testing

This course presents everything technicians need to know how to correctly sample aggregates for laboratory testing.

Course with written and proficiency exams: 8 hrs

\$350

PDH 6

Call 352.273.1661 for more information

Asphalt

Asphalt Combo – Inspection and Maintenance

Target Audience: Design, construction, and maintenance engineers and technicians involved with pavement preservation and rehabilitation techniques

This workshop teaches pavement distress evaluation techniques to determine materials, equipment, and procedures needed for effective crack sealing, asphalt patching, and utility repair for quality/cost-effective asphalt surface treatments. Ample time is allowed for questions about maintenance issues.

\$175 Public • \$250 Private

6 hrs

Call 352.273.1685 for more info

CEU/PDH 0.6/6

Asphalt Inspection

Target Audience: Inspectors, contractors, technicians, and personnel with construction inspection job duties

This course includes basic concepts of asphalt materials, inspection techniques, keys to obtaining high quality work on new construction and resurfacing projects, common problem areas, and how to properly correct them. This course does not lead to qualification associated with the Construction Training Qualification Program (CTQP).

\$125 Public • \$210 Private

6 hrs

Call 352.273.1685 for more info

CEU/PDH 0.6/6

Asphalt Mix Design CTQP

Target Audience: Technicians responsible for designing hot-mix asphalt

This course provides engineers, technicians, and inspectors with an understanding of how asphalt mixes are developed in accordance with Superpave specifications.

Course with written exam:

48 hrs

\$600

PDH 24

Call 352.273.1661 for more information

Asphalt Pavement Maintenance

Target Audience: Inspectors, contractors, road crew supervisors, and personnel with construction inspection job duties

This workshop focuses on materials, construction details, and maintenance practices that help extend asphalt pavement service life. Videos and illustrations demonstrate proper maintenance techniques while citing common mistakes which arise on the jobsite. Ample time is allowed for questions about maintenance issues.

\$125 Public • \$210 Private

6 hrs

Call 352.273.1685 for more info

CEU/PDH 0.6/6

Asphalt Paving Basics for Florida Cities and Counties

Target Audience: Maintenance field technicians, maintenance supervisors, construction workers, inspectors, designers, and pavement management technicians

This course is patterned after the Asphalt Paving Level 1 course and can be customized to fit your needs. The class includes random sampling at the plant and roadway; hands-on demonstration of rolling straight edge, cross slope and temperature measurement; core sampling; tack coat spread rate and hot-mix asphalt yield calculations; and nuclear density determination, if required. A simplified, alternative exam is also available upon request.

Call 352.273.1661 for pricing

8 hrs

Asphalt Paving Level 1 CTQP

Target Audience: FDOT and contractor quality control personnel responsible for verifying roadway characteristics

Learn how to use a rolling straight edge, measure cross slope, perform core sampling, calculate yields, layout core locations, and take temperatures.

Course with written and proficiency exams:

8 hrs

\$350

PDH 6

Call 352.273.1661 for more information

Asphalt Paving Level 2 CTQP

Target Audience: FDOT and contractor quality control personnel, quality control managers, roadway technicians, equipment operators, and paving supervisors

Review good construction practices and equipment operation techniques necessary to place and compact a Superpave mixture that meets requirements for smoothness, texture, density, cross slope, and thickness. Topics also include project administration; surface preparation; specification requirements; hot-mix asphalt delivery, placement, and compaction; balancing production rates; and field testing and inspection.

Course with written exam:

24 hrs

\$525

CEU/PDH 1.7/17

Call 352.273.1661 for more information

Asphalt Plant Level 1 CTQP

Target Audience: FDOT and contractor quality control personnel responsible for verifying asphalt material quality characteristics

Learn how to perform the tests required for quality control, verification, resolution, and acceptance of asphalt mix in accordance with standard test methods.

Course with written and proficiency exams:

24 hrs

\$645

PDH 16

Call 352.273.1661 for more information

Asphalt Plant Level 2 CTQP

Target Audience: FDOT and contractor quality control personnel, quality control managers, plant technicians, and plant operators

Covers materials management, specification requirements, plant calibration, and equipment operation necessary to produce a Superpave mixture that meets design criteria and mix production requirements

Course with written exam: 24 hrs
 \$600 CEU/PDH 1.7/17
 Call 352.273.1661 for more information

Hot-Mix Asphalt Pavement Evaluation, Preservation, and Rehabilitation

Target Audience: Design, construction, and maintenance engineers and technicians involved with pavement preservation and rehabilitation techniques

This course presents techniques to identify the causes and patterns of hot-mix asphalt pavement distress, as well as evaluation components and preservation and rehabilitation techniques.

\$150 Public • \$250 Private 12 hrs
 Call 352.273.1685 for more info CEU/PDH 1.2/12

Integrating Pavement Preservation Practices and Pavement Management

Target Audience: Engineers, road agency supervisors, and others involved in pavement management, maintenance, and evaluation

This condensed version of the National Highway Institute (NHI) course provides information needed for successful use of pavement management activities to support a pavement preservation program.

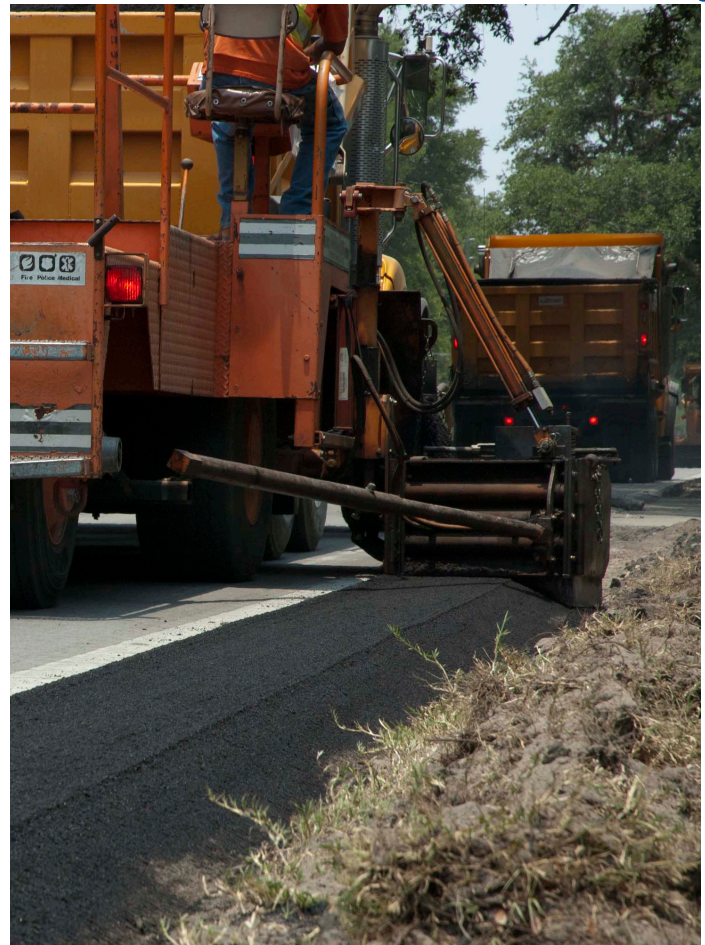
\$150 Public • \$250 Private 7 hrs
 Call 352.273.1685 for more info CEU/PDH 0.7/7

Long-Term Pavement Performance (LTPP) — Pavement Distress Identification

Target Audience: Engineers, road agency supervisors, and those who evaluate pavement for maintenance and/or repair

This course covers distress definitions, as used by LTPP for each pavement type, and best approaches for performing test section measurements. It incorporates classroom and field reviews, including visits to two asphalt and two concrete locations. Distresses that are observed in the field at the first location are discussed and rated by participants. The second site is used as an exam with no group discussion prior to having the participants perform the ratings.

\$295 Public • \$395 Private 17.5 hrs
 Call 352.273.1685 for more info CEU/PDH 1.75/17.5



Safety Edge

Target Audience: Asphalt contractors, city/county/state agency roadway designers/inspectors, paving contractors, paving crews, and roadway safety personnel

Pavement edge drop-off on highways has been linked to many serious crashes, including fatal collisions. Drop-offs occur when there are height differences between a paved road and the adjacent graded material. Conventional paving techniques result in vertical or nearly vertical pavement edges, which can cause safety concerns when they are exposed. To mitigate vertical drop-offs, FHWA advocates installing the Safety Edge on pavements during paving or resurfacing projects, achieved by attaching a Safety Shoe to the pavement machine. This technology allows drivers who drift off highways to return to the pavement safely.

This course includes information on how to install and use the Safety Shoe, what the expectations are for this tool, and what changes or procedures will be necessary for a job. It includes a hands-on demonstration of the installation and use of the actual Shoe.

\$120 Public • \$200 Private 12 hrs
 Call 352.273.1685 for more info CEU/PDH 1.2/12



Bicycle and Pedestrian Community Bicycle and Pedestrian Safety Programs

Target Audience: Local safety officials and school resource officers

This course covers **Earn-a-bike** community programs, design and implementation of bicycle safety rodeos, strategies for bicycle enforcement, walk audits, and bicycle-friendly community assessments. It is approved by the Safety Council as an alternative transportation safety class for DUI offenders. The course duration varies depending on the content and audience.

\$125 Public • \$210 Private 16 hrs

Call 352.273.1685 for more info CEU/PDH 0.6-0.8/6-8

League Cycling Instructor (LCI) Training (League of American Cyclists)

Target Audience: Community safety officials, law enforcement officers, school resource officers, physical education/health teachers, bike/ped coordinators, bike/ped advisory board members, and community volunteers

This course offers national certification for teachers, law enforcement officers, community officials in bicycling skills, and education following the national curriculum. It is a rigorous on-bike course, for which you must provide your own bicycle (road) and helmet.

Prerequisite: 9 hour *Road 1* course (available on request)

Call 352.273.1685 for pricing 16 hrs

CEU/PDH 1.6/16

Bridges Bridge Maintenance

Target Audience: All personnel responsible for bridge maintenance and repair — ranging from crews to engineers

This National Highway Institute (NHI) course covers bridge maintenance management and safety, as well as maintenance and repair for the bridge deck, superstructure, and structure.

\$800 Public • \$950 Private

28 hrs

Call 352.273.1685 for more info

CEU/PDH 2.8/28

Chainsaw Chainsaw Safety

Target Audience: Chainsaw operators — all skill levels

Why does your chainsaw pull to the right when cutting a tree? How should you cut this tree safely? Need answers? This class is for you! Topics include operator safety, chainsaw maintenance, and safe use. The safety training duration varies with skill level.

\$75 Public/\$150 Private

Length varies

Call 352.273.1685 for more information

Chainsaw Safety/Hands-on

Target Audience: Chainsaw operators — all skill levels

This course includes the Chainsaw Safety course listed above. In addition, learn the correct use of protective gear, the safe use of wedges/angles, and how to fell trees using OSHA-recommended methods. Participants will fell a tree using proper equipment and techniques and learn about chainsaw operator safety, maintenance, and safe use. The safety and hands-on training duration varies with skill level.

\$195 Public • \$295 Private

Length varies

Call 352.273.1685 for more information

Chainsaw Safety in Disaster Recovery

Target Audience: Chainsaw operators — all skill levels

This informative, hands-on, safety-oriented class is open to all skill levels. A limited number of hands-on slots are available. Learn the correct way to safely remove and clean up fallen trees and to properly use all safety equipment. Bring your chainsaw, and have it examined for any potential problems. Workshop emphasizes OSHA procedures and personal protection equipment (PPE). The safety and hands-on training duration varies with skill level.

\$195 Public • \$295 Private

length varies

Call 352.273.1685 for more information

Concrete and Cement

Associate Concrete Transportation Construction Inspector ACI

Target Audience: FDOT employees who perform ready-mix concrete structural inspections and hold the ACI Concrete Field Testing Technician Grade I certification

This ACI course includes information about concrete construction, including plans reading; formwork installation and removal; reinforcements; embedments; sampling and testing freshly mixed concrete; and conveying, placing, consolidating, finishing, jointing, curing, and protecting concrete.

Course with written exam: 20 hrs

Call 352.273.1661 for pricing

Concrete Batch Plant Operator CTQP

Target Audience: All concrete batch plant operators

Participants learn to prepare concrete design mixes in accordance with standard test methods. The course focuses on performing calculations required for batching concrete for an FDOT-approved ready-mix concrete plant.

Course with written exam: 10 hrs

\$325 CEU/PDH 0.8/8

Call 352.273.1661 for more information

Concrete Field Testing Technician Grade 1 ACI

Target Audience: FDOT employees who perform acceptance tests to verify ready-mix concrete

This ACI course includes information about and demonstrations of how to properly perform and record the results of seven basic field tests on freshly mixed concrete.

Course with written and proficiency exams: 16 hrs

Call 352.273.1661 for pricing

Concrete Laboratory Testing Technician Level 1 ACI

Target Audience: FDOT employees who perform, record, and report the results of basic laboratory procedures for aggregates and concrete.

This certification is automatically awarded to trainees who successfully complete the following courses, both of which are offered by the Florida T2 Center and are described in this portfolio:

- ACI Concrete Strength Testing Technician (see page 9)
- ACI Aggregate Testing Technician Level 1 (see page 5)

Call 352.273.1661 for pricing

Concrete Laboratory Testing Technician Level 2 ACI

Target Audience: FDOT employees having either (1) at least one year (2000 hours) of approved work experience or (2) a combination of work experience and education and hold a current ACI Concrete Laboratory Testing Technician Level 1 certification

This ACI course includes information about and demonstrations of how to properly perform, record, and report the results of advanced laboratory procedures for aggregates and concrete.

Course with written and proficiency exams: 24 hrs

Call 352.273.1661 for pricing

Concrete Strength Testing Technician ACI

Target Audience: FDOT employees who perform laboratory acceptance tests to verify concrete strength

This ACI course includes information about and demonstrations of how to properly perform, record, and report the results of four basic ASTM laboratory procedures related to the determination of concrete compressive and flexural strength.

Course with written and proficiency exams: 8 hrs

Call 352.273.1661 for pricing

Concrete Transportation Construction Inspector ACI

Target Audience: FDOT employees who perform ready-mix concrete structural inspections and hold the ACI Concrete Field Testing Technician Grade I certification

This ACI course includes information about concrete construction, including plans reading, soil-cement, piling installations, formwork installation and removal, reinforcements, embedments, sampling and testing freshly mixed concrete, conveying, placing, consolidating, finishing, jointing, curing, and protecting concrete.

Course with written exam: 24 hrs

Call 352.273.1661 for pricing

FDOT Concrete Field Inspector Specification CTQP

Target Audience: FDOT and contractor Quality Control technicians who perform job site acceptance tests and inspections

This updated 2 ½ day course, based on the July 2011 Supplemental Specifications, will improve your understanding of FDOT's Standard Specification Sections 346, 347, 400, 415, and other sections relevant to the placement and field testing of ready-mix concrete.

Course with written exam: 18 hrs

\$500 CEU/PDH 1.8/18

Call 352.273.1661 for more information

2014 Design Basics of a Good Road

Target Audience: Inspectors, contractors, road crews, and supervisors seeking basic road construction information

This course features materials, design features, compaction, paving mixes, traffic considerations, soils, road geometry, and drainage of a good road. Videos and illustrations demonstrate proper maintenance techniques while citing common mistakes arising on the jobsite. Ample time is allowed for questions on specific maintenance issues.

\$125 Public • \$210 Private 6 hrs

Call 352.273.1685 for more info CEU/PDH 0.6/6

Highway Capacity and Traffic Impact Analysis **NEW!**

See Page 4 for more information.

Highway Safety Manual Practitioners Guide for Geometric Design Features

Target Audience: State and local highway engineers and consultants involved in the design of both two-lane rural and/or multilane highways

This course includes both two-lane and multi-lane highways and offers a proven methodology for the safety performance of geometric design decisions like predicting capacity and level of service based upon large-scale definitive research. The instructor presents crash prediction models for total crashes and cross-section-related crashes based upon lane width, shoulder width, roadside hazard, traffic volume (exposure), and other characteristics. The course also offers examples of safety performance prediction for highway segments and intersections.

\$225 Public • \$275 Private 14 hrs

Call 352.273.1685 for more info CEU/PDH 1.4/14

Intersection Capacity Analysis **NEW!**

See Page 4 for more information.

Traffic Engineering Fundamentals

Target Audience: Non-traffic engineers or technicians, engineering/planning professionals who regularly interface with traffic engineering or are new to the discipline

This class covers signal systems and operations, analysis of roadway capacity and level of service, intelligent transportation systems, traffic control devices,

roundabouts, and traffic incident management. Choose from all three days, days one and two, or day three.

All three days: 21 hrs

\$545 Public • \$625 Private CEU/PDH 2.1/21

Days one and two: 14 hrs

\$425 Public • \$550 Private CEU/PDH 1.4/14

Day three: 7 hrs

\$250 Public • \$350 Private CEU/PDH 0.7/7

Call 352.273.1685 for more information

Transportation Site Impact and Trip Generation

Target Audience: City, county, and state engineers and planners, consultants, and others involved in the design and approval of new land developments and modification of existing facilities

This workshop presents the methodology, techniques, and procedures used in traffic analyses for proposed land developments, the determination of off-site and on-site transportation requirements, and an approach to the preparation of reports and findings. The workshop is based on the Institute of Transportation Engineers (ITE) methodologies and recommended practices and presents a discussion of trip generation anomalies, cautions, and case studies. Participants work in teams to analyze illustrative problems and will receive ITE's publication, Transportation Impact Analyses for Site Development: an ITE Proposed Recommended Practice, along with presentation materials.

\$275 Public • \$375 Private 14 hrs

Call 352.273.1685 for more info CEU/PDH 1.4/14

Transportation Site Impact with Highway Capacity Analysis **NEW!**

See Page 4 for more information.

Earthwork

Earthwork Construction Inspection Level 1 CTQP

Target Audience: FDOT and contractor quality control technicians who perform field testing of soils used for roadway construction

Trainees will learn how to safely and effectively sample soil materials from the roadway, take earthwork density readings, and record those findings in a density log book. Topics include nuclear gauge use and maintenance, determination of moisture levels in the soil, and utilization of the FDOT Earthwork Records System. Nuclear Safety Certification is required for qualification.

Course with written and proficiency exams: 14 hrs

\$475 CEU/PDH 0.8/8

Call 352.273.1661 for more information

Earthwork Construction Inspection Level 2 CTQP

Target Audience: FDOT and contractor quality control technicians who verify that earthwork test results meet acceptance criteria and comply with standards, specifications, and contract documents

Improve your skills in applying standards and specifications associated with earthwork sampling, testing, recording, and inspecting earthwork construction on FDOT projects.

Course with written exam: 10 hrs
\$400 CEU/PDH 0.8/8
Call 352.273.1661 for more information

Nuclear Density Gauge Safety (including HazMat)

Target Audience: Technicians who use or work near nuclear density gauges

This course covers the safe operation of portable nuclear density gauges and includes safety regulations for storing, transporting, and handling gauges. Technicians transporting and handling nuclear density gauges are required to attend the eight-hour Nuclear Density Gauge Safety course. Passing the exam fulfills this requirement. Continued gauge usage requires either successfully completing this training every three years or the Nuclear Density Gauge HazMat requalification training (below). The class is required for Earthwork Construction Inspector Level 1 qualification and is highly recommended for Asphalt Paving Level 1 technicians as they use or work near nuclear density gauges.

Course with written exam: 8 hrs
\$150 CEU/PDH 0.6/6
Call 352.273.1661 for more information

Nuclear Density Gauge HazMat (requalification)

Target Audience: Technicians who use or work near nuclear density gauges

This course covers the safe transport requirements of portable nuclear density gauges and includes safety regulations for storing, transporting, and handling gauges. Technicians transporting and handling nuclear density gauges who have attended the eight-hour Nuclear Density Gauge Safety course are required to successfully complete this training every three years. Passing the exam fulfills this requirement. The class is required for Earthwork Construction Inspector Level 1 qualification and is highly recommended for Asphalt Paving Level 1 technicians as they use or work near nuclear density gauges.

Course with written exam: 4 hrs
\$100 CEU/PDH 0.3/3
Call 352.273.1661 for more information

Geotech Drilled Shaft Inspection CTQP

Target Audience: FDOT and contractor quality control technicians responsible for inspecting drilled shaft foundations

Recognize and become familiar with the drilled shaft construction process, equipment, nomenclature, and FDOT Standard Specifications for Road and Bridge Construction (SSRBC) Section 455.

Course with written exam: 24 hrs
\$600 CEU/PDH 1.6/16
Call 352.273.1661 for more information

Geotechnical Engineering for Non-Geotechnical Engineers — The Basics

Target Audience: Non-soil engineers, technicians, inspectors, project engineers/managers, architects, landscape architects, geologists, earth scientists, civil and other engineers, construction personnel, industry tech/sales representatives, public works professionals, and engineers-in-training (no formal geotechnical education is needed)

Develop your understanding of the basics with this straightforward, practical, entry-level course which describes and analyzes each important element of soil engineering: soil classifications and behavior, field investigations, soils reports, water effects on soils, dewatering, earth pressures and stresses, soil strength and settlement, compaction of sands and clays, construction procedures, stability of cuts and fills, geosynthetics, and earthwork.

\$125 Public • \$210 Private 6 hrs
Call 352.273.1685 for more info CEU/PDH 0.6/6

Pile Driving Inspection CTQP

Target Audience: FDOT and contractor quality control technicians responsible for inspecting driven pile foundations and retaining wall installations

Recognize and become more familiar with how to record and document activities related to pile driving projects. Learn more about pile driving equipment, processes, terminology, and FDOT's Standard Specifications for Road and Bridge Construction (SSRBC) Section 455.

Course with written and proficiency exams: 24 hrs
\$725 CEU/PDH 1.6/16
Call 352.273.1661 for more information

2014 Heavy Equipment Backhoe — Safety/Hands-on

Target Audience: Backhoe operators — all skill levels

This training provides equipment operators with classroom and hands-on experience while acquainting operators with proper road profiles, drainage issues, maintenance methods, and new techniques and technologies. It also covers safety, backhoe types, maintenance, speed, aggregate types, road profiles, ditching, draining, dust control, wetlands issues, and more. The instructor provides field assistance on backhoe techniques and solving problems on your agency's local roadways. The safety and hands-on training duration varies with skill level.

\$250 Public • \$350 Private

Length varies

Call 352.273.1685 for more information

Bucket Truck — Safety/Hands-on

Target Audience: Operators, managers, administrators, and supervisors — all skill levels

This workshop is held at your location using your equipment. Topics include personal safety, personal protection equipment, pre-use inspection, functional operation, and inspection of all components. It also covers the importance of routine inspection reports and unit maintenance, as mandated/required by OSHA, as well as information on mechanics, hydraulics, fluids, and the

dielectric testing integrity of the mast and boom/bucket. Participants perform hands-on pre-use inspection, correct setup of a unit on available surface for maximum stability, and load capacities of the bucket on a five-degree slope. Participants earn a certificate of competency for successfully completing the course and written exam. The safety and hands-on training duration varies with skill level.

\$250 Public • \$350 Private

Length varies

Call 352.273.1685 for more information

Crane Truck Safety : New Operator and Experienced Operator Hazard Analysis **NEW!**

See Page 4 for more information.

Forklift-Powered Industrial Truck — Safety/Hands-on

Target Audience: Warehouse, shop, and maintenance drivers — all skill levels

This safety workshop complies with all OSHA regulations and is held at your location using your equipment. Topics include how a forklift works, safe operating rules/techniques/procedures, load handling, and inspection. Participants earn a certificate of competency for successfully completing the written and proficiency exams. The safety and hands-on training duration varies with skill level.

\$195 Public • \$295 Private

Length varies

Call 352.273.1685 for more information

Front-end Loader — Safety/Hands-on

Target Audience: Front-end loader operators — all skill levels

This safety workshop complies with all OSHA regulations and is held at your location using your equipment. Topics include how a front-end loader works, safe operating rules/techniques/procedures, load handling, and inspection. Participants earn a certificate of competency for successfully completing the course and written exam. The safety and hands-on training duration varies with skill level.

\$325 Public • \$425 Private

Length varies

Call 352.273.1685 for more information

Gradall Hands-on

Target Audience: Gradall operators, managers, operator supervisors — all skill levels

This workshop provides operators with classroom training and hands-on experience. It acquaints the operator with proper road profiles, drainage issues, maintenance methods, and new techniques and technologies. The classroom session covers safety, types, maintenance, articulation, speed, road profiles, ditching, wetlands issues, etc. All participants receive a manual for future reference. The second portion of training is "hands-on". Our instructor travels to your municipality and provides



field assistance on Gradall techniques on your operator's local roads.

\$350 Public • \$475 Private

Length varies

Call 352.273.1685 for more information

Motor Grader Operator — Safety/Hands-on

Target Audience: Motor grader operators, managers, and operator supervisors — all skill levels

This course and manual acquaint operators with proper road profiles, drainage issues, maintenance methods, and new techniques and technologies. Topics include safety, grader speed/types/maintenance, blade pitch, articulation, aggregate types, road profiles, ditching, draining, washboarding, dust control, wetlands issues, and more. The instructor travels to your municipality and provides field assistance on grader techniques and solving problems on your local roads. The safety and hands-on training duration varies with skill level.

\$350 Public/\$475 Private

Length varies

Call 352.273.1685 for more information

Tractor Mower Operator Safety

Target Audience: Tractor mower operators — all skill levels

An AEMF/FEMA-based best safety practices Industrial Mower Operator Safety Training Program. This course covers all makes and models of tractors and mowers, and includes both classroom and hands-on training.

\$145 Public • \$250 Private

8 hrs

Call 352.273.1685 for more information

Maintenance of Traffic

Maintenance of Traffic — Basic

Target Audience: Individuals working in traffic control zones on state roadways with responsibility for flagging traffic

Basic MOT training is required for every employee flagging traffic in traffic control zones. This course includes a review of Part 6E of the MUTCD, Florida Design Standard Index 600, and general information for traffic control through work zones. This training may be performed in-house by a qualified Intermediate MOT or Advanced MOT employee. Requalification is required every four years.

\$90 Public • \$120 Private

6 hrs

Call 352.273.1685 for more information

Maintenance of Traffic — Intermediate

Target Audience: Persons with direct control of placement, maintenance, and inspection of traffic control devices, training and placing flaggers, and drafting or generating electronic work zone control plans

Successful course completion provides Intermediate MOT qualification. Materials include in-depth analysis of Florida Design Standard Index 600 and Part 6 of the

MUTCD. Requalification is required every four years.

\$170 Public • \$210 Private

16 hrs

Call 352.273.1685 for more info

CEU/PDH 1.5/15

Maintenance of Traffic — Intermediate Refresher

Target Audience: See Maintenance of Traffic — Intermediate

Prerequisite: Valid Intermediate Maintenance of Traffic qualification

Satisfactory completion of Intermediate Refresher training must occur on or before the participant's Intermediate MOT qualification expiration date to extend qualification for four years. Participants who do not pass the exam must take the full, 16-hour course to requalify. This refresher course is an overview of the initial course with concentration on changes that have occurred to the Florida Design Standard Index 600 and Part 6 of the MUTCD in the past four years.

\$120 Public • \$160 Private

4 hrs

Call 352.273.1685 for more info

CEU/PDH 0.3/3

Maintenance of Traffic — Advanced

Target Audience: All personnel with responsibility for, or authority to decide on specific maintenance of traffic requirements to be implemented on state roadways, including the engineer responsible for the work zone traffic control plan development and the work zone traffic control supervisor

Prerequisites: One year of experience in work zone traffic control and responsibility for work zone traffic control plan development

Successful course completion provides Advanced MOT qualification. Successful participants will be able to analyze, design, implement, and operate traffic control plans in a clear and concise manner. Requalification is required every four years.

\$295 Public • \$395 Private

20 hrs

Call 352.273.1685 for more info

CEU/PDH 1.675/16.75

Maintenance of Traffic — Advanced Refresher

Target Audience: See Maintenance of Traffic — Advanced

Prerequisite: Valid Advanced Maintenance of Traffic qualification

Satisfactory completion of the Advanced Refresher training must occur on or before the participant's Advanced MOT qualification expiration date to extend qualification for four years. Participants failing the exam must retake the full, 20-hour course to requalify. This refresher course is an overview of the initial course with concentration on changes to the Florida Design Standards, Part 6 of the MUTCD, PPM, CPAM, and Florida's Standard Specifications for Road and Bridge Construction.

\$150 Public • \$200 Private

4 hrs

Call 352.273.1685 for more info

CEU/PDH 0.3/3

Mobile Equipment and Internal Work Zone Safety

Target Audience: Public works employees in water/wastewater, utilities, parks, irrigation, or indoor/outdoor municipal work zones, and those who operate/work near mobile equipment

This workshop covers mobile equipment hazards, crashes, work zone perimeters/barriers, inclines, surface conditions, proximity to excavations/general stability, falling object/rollover protective structures, vehicle restraint devices, rider-passenger rules, pedestrian worker safety rules, suspended loads/rigging, trailering, equipment inspection, pre-job checklists, unattended equipment, and nighttime security.

\$75 Public • \$100 Private

4 hrs

Call 352.273.1685 for more information

Pilot/Escort Flagging

Pilot/Escort Flagging

Target Audience: Personnel responsible for assisting oversize load drivers and warning the motoring public of oversize loads

This course reviews the official rules for Florida escorts found in the Florida Administrative Code Chapter 14-26.012, as well as basic maneuvering with oversize loads, and flagging procedures from the MUTCD Part 6E. This course fulfills one-third of Florida's escort qualification requirements: (1) must be at least 18 years of age with a valid driver's license; (2) successfully complete a minimum eight-hour National Safety Council Defensive Driving course or possess a valid CDL (Class a, b, or c); and (3) successfully complete an eight-hour Pilot/Escort Flagging training. A four-year certificate is mailed to trainees who successfully complete the exam.

\$120

8 hrs

Call 352.273.1670 for more information

Pilot/Escort Flagging Refresher

Target Audience: Refer to Pilot/Escort Flagging

Prerequisite: Valid Florida Pilot/Escort Flagging course certificate

This refresher course is an overview of the initial course with concentration on February and October 2010 changes to the Florida Administrative Code. A four-year certificate is mailed to trainees who successfully complete the exam. The course is also available online through the Florida T2 Center website (see Pilot/Escort Flagging Refresher Online).

\$60

4 hrs

Call 352.273.1670 for more information



Pilot/Escort Flagging Refresher Online

Target Audience: Refer to Pilot/Escort Flagging

Prerequisite: Valid Florida Pilot/Escort Flagging course certificate

This Computer Based Training (CBT) refresher consists of approximately four hours of initial course review (self-paced) with concentration on February and October 2010 changes to the Florida Administrative Code. A four-year certificate is mailed to trainees who successfully complete the exam. Visit t2ctt.ce.ufl.edu/pero to enroll.

\$60

4 hrs

Call 352.273.1670 for more information

Project Management

Construction Estimating

Target Audience: Employees responsible for making construction quantities estimates

This workshop provides agency personnel with practice and experience in making computations for estimating and measuring roadway maintenance quantities and amounts. Participants must supply their own calculator (TI36x or equivalent) and be able to use it to add, subtract, multiply, and divide.

\$120 Public • \$210 Private

4 hrs

Call 352.273.1685 for more information

Economic Evaluation of Public Projects

Target Audience: Engineers, managers, and technicians who assist with/analyze the financial feasibility of construction projects using public monies

This workshop provides a basic foundation in engineering economics principles and how to apply them to make realistic economic decisions between competing alternative solutions. The framework for decision making from an economic viewpoint includes the theory, knowledge, and tools used to analyze commonly encountered engineering problems.

\$200 Public • \$300 Private 8 hrs
Call 352.273.1685 for more info CEU/PDH 0.7/7

Final Estimates Level 1 CTQP

Target Audience: FDOT personnel, contractors, and construction inspection personnel responsible for providing proper measurements, computations, documentation, and submission of final estimates

This course covers general responsibilities and procedures for final estimates, types and methods of proper documentation, and methods for measuring and computing pay-item quantities.

Course and written exam: 8 hrs
\$350 CEU/PDH 0.6/6
Call 352.273.1661 for more information

Final Estimates Level 2 CTQP

Target Audience: All employees responsible for producing, reviewing, and approving monthly, progress, and final payments and/or compiling final estimates packages

This course covers contract language, asphalt records, final plans, certifications, earthwork requirements, and fuel and bituminous adjustments. It also presents standard policies, procedures, and common practices necessary to produce optimal, accurate, and timely payments.

Course with written exam: 16 hrs
\$575 CEU/PDH 1.4/14
Call 352.273.1661 for more information

FDOT Specifications

Target Audience: Roadway designers, specification writers, engineers, and contractors

FDOT uses Contractor Quality Control (CQC) specifications on all projects for asphalt, concrete, and earthwork, which fundamentally changes acceptance and testing on FDOT projects and may affect your city or county. Learn a simplified process and easily customized tools that follow FDOT's Standard Specifications for Road and Bridge Construction, become familiar with the workbook and process of selecting files to include in project packages, and learn the macro to pull it all together.

\$125 Public • \$210 Private 6 hrs
Call 352.273.1685 for more info CEU/PDH 0.6/6

Inspecting Municipal Properties

Target Audience: Employees responsible for safety inspection of public properties

This course covers the inspection of indoor/outdoor work areas, public properties, and access areas; emphasizes basic OSHA regulatory compliance, standard work place safety issues, desirable/undesirable working conditions, personal protective equipment (PPE) requirements, signage and markings; and presents agency inspection checklist forms and recommendations for proactive maintenance with limited resources.

\$100 Public • \$150 Private 4 hrs
Call 352.273.1685 for more information

Introduction to Highway Construction Inspection

Target Audience: Inspectors, contractors, technicians, and construction personnel

This course provides participants with an understanding of construction processes and a useful reference for highway construction inspection. It covers chain of command, the preconstruction conference, working shop drawings, construction records, materials control, utility relocation, schedule/contract time, progress estimates, safety, contract modifications, contractor claims, acceptance of work, and final estimates.

\$125 Public • \$210 Private 7 hrs
Call 352.273.1685 for more info CEU/PDH 0.7/7

Plans Reading Fundamentals NEW!

See Page 4 for more information.

Project Manager/Inspector Fundamentals

Target Audience: Roadway managers and inspectors

This introduction and review course gives managers and inspectors the basic tools required for job planning. Participants will review and perform hands-on training for plans reading/review, soil borings, geometrics, field layout, survey, utilities, bridges, drainage, soils, geotechnical work zone safety, and construction safety. Participants will form teams, conduct a plans review, and an onsite/field review.

\$295 Public • \$395 Private 11 hrs
Call 352.273.1685 for more info CEU/PDH 1.1/11

Quality Control Manager CTQP

Target Audience: FDOT, contractor, and construction inspection personnel involved in acceptance decision making

Learn how to develop quality control plans and how to monitor adherence to those plans during the construction process.

Course with written exam: 14 hrs
\$400 CEU/PDH 1.2/12
Call 352.273.1661 for more information

Safety

Building and Facility Maintenance Safety

Target Audience: City, county, and special maintenance employees

This course is a must for your maintenance crew. It reviews accident history, relative OSHA standards, work zone safety issues, basic work zone setup, vacant work zone issues, personal protective equipment (PPE), shop and work area housekeeping, power and hand tool safety, welding, fall protection, excavating issues, and property inspection and forms.

\$125 Public • \$200 Private

7 hrs

Call 352.273.1685 for more information

Chemical Spill Prevention, Control & Countermeasures

Target Audience: Public works, streets/roads, parks, building maintenance, wood or metal shop, fleet, and water/wastewater utility workers

The training introduces participants to basic chemical (or hazardous material) management. It covers receipt, storage, use, normal disposal, and clean-up of, as well as emergency response for, many chemical substances commonly found in cities, counties, and special districts.

Call 352.273.1685 for pricing

2 hrs

Common Sense Solutions for Intersection Safety Problems

Target Audience: Elected officials, law enforcement officers, municipal workers, safety advocacy groups, roadway designers, public works employees, directors, and engineers

This class provides the basics of intersection safety problems, issues, and liability, as well as the officials' role in making local intersections safer while protecting their governments from litigation. It also provides practical information that does not require engineering expertise for common safety problems, as well as background information on problems that do require engineering expertise.

\$125 Public • \$210 Private

7 hrs

Call 352.273.1685 for more info

CEU/PDH 0.7/7

Community Approach to Safe Routes to School Programs

Target Audience: Community safety officials, CTST members, bike/ped coordinators, Safe Kids Coalition members, county health staff, school administrators, and interested PTA members

This course is a national Safe Routes to School (SRTS) overview covering the 5 Es (Engineering, Education, Encouragement, Enforcement, and Evaluation) and practical ways to create a community-based SRTS

program. It addresses state funding applications and applying for infrastructure/non-infrastructure funds. It also includes a field exercise walk audit of a school site and shares enforcement strategies, education programs, encouragement ideas, and success stories about local walking school buses.

Call 352.273.1685 for pricing

7 hrs

CEU/PDH 0.6/6

Confined Space Entry Certification

Target Audience: Municipal water, wastewater and stormwater utility employees

This course identifies and addresses common municipal permit-required, confined space situations rarely covered by other programs. It offers a comprehensive review of Confined Space Entry policy and the most advanced permit form. It also covers implementation methods; introduces hazards specific to water, wastewater, and stormwater facilities; presents new safety products, accident prevention, and site analysis measures; and includes a field exercise.

\$125 Public • \$210 Private

8 hrs

Call 352.273.1685 for more information

Defensive Driving Skills and Crash Prevention for Heavy Vehicle Operation

Target Audience: Operators of heavy equipment — all skill levels

This class develops knowledge of and driving skills for dual and single axle dump trucks, ¾ ton pickups, emergency vehicles, and more. Increase your confidence level in operating vehicles with a GVWR over 26,000 lb and towing trailers/vehicles rated at 10,000 lb GVWR or less. The safety and hands-on training duration varies with skill level.

\$175 Public • \$295 Private

Length varies

Call 352.273.1685 for more information

Fleet Maintenance Safety

Target Audience: Fleet mechanics, managers, supervisors, foremen, and safety officers

Attendees are introduced to basic and advanced fleet management safety concepts. Learn about serious injury and fatality incidents related to municipal fleet operations. The course emphasizes how you can substantially reduce the likelihood of a serious city or county garage accident through work site safety engineering, the practice of safe procedure, the use of personal protective equipment (PPE), and regular safety education.

\$125 Public • \$210 Private

6 hrs

Call 352.273.1685 for more information

Lockout/Tagout: Isolation and Control of Hazardous Energy at Municipal Work Places

Target Audience: Public works/utility employees, water/wastewater distribution/plant operators, and anyone exposed to hazardous energy

This course combines a total program approach to lockout/tagout principles with worksite safety engineering, safe work practices, protective devices/products, special clothing and proper use of personal protective equipment. It also presents hazardous energy sources, lockout/tagout concepts applicable to public work spaces, recent public sector lockout/tagout hazards and accidents, and available isolation and/or lockout devices.

\$75 Public • \$100 Private

4 hrs

Call 352.273.1685 for more information

Low-Cost Safety Improvements for Rural Roads

Target Audience: Elected officials, law enforcement officers, municipal workers, safety advocacy groups, roadway designers, street superintendents, public works employees, directors, and engineers

This class is a basic review of low-cost safety solutions for roadways, emphasizing rural roads. It provides information on common safety problems in a practical format that does not require engineering expertise.

\$125 Public • \$210 Private

6 hrs

Call 352.273.1685 for more information

OSHA-Competent Person

Target Audience: Engineers, contractors, supervisors, inspectors, and construction and road crews

This course covers the OSHA Trenching and Excavation Competent Person requirements. Learn about soil classifications, tests, hazard recognition, and how to apply the standards.

\$125 Public • \$210 Private

5 hrs

Call 352.273.1685 for more information

Power Line Safety for the Municipal Worker

Target Audience: Public works/utility crews, safety/safety loss control officers, and anyone working around power utilities

This program educates workers on above- and below-ground power line configurations, activities that place them at risk of contact with high voltage lines, accident prevention methods, and safe work practices when operating new power lines. It also covers power line accident scenarios, issue/incident prevention, and ground penetrating radar. It includes a field exercise and demonstration.

\$75 Public • \$100 Private

4 hrs

Call 352.273.1685 for more information

Road Safety 365: A Workshop for Local Governments

Target Audience: Local and rural road and public works supervisors, decision-makers, road crews, elected officials, public safety advocates, State Department of Transportation personnel, law enforcement, consultants, regional and rural development organizations, municipal associations, town safety committees, local planning commissions, metropolitan/rural planning organizations, university extension offices, and Local Technical Assistance Program (LTAP) and Tribal Technical Assistance Program (TTAP) personnel.

This one-day workshop is designed to provide local and rural agencies with practical and effective ways to incorporate safety solutions into daily activities and the project development process by improving the physical factors of local and rural roadways that may contribute to crashes. The course was developed by the FHWA Office of Safety as part of a package of products focused for local and rural governments.

\$200 Public • \$275 Private

8 hrs

Call 352.273.1685 for more info

CEU/PDH 0.8/8

Road Safety Audits for Community Traffic Safety Teams (CTSTs)

Target Audience: Community Traffic Safety Team (CTST) members

Road Safety Audits (RSAs) for CTSTs, an abbreviated version of the full course, is available only to CTST members. The RSA is an effective tool to help reduce injuries and fatalities on your road network. This workshop provides CTST members with a step-by-step procedure for performing RSAs to recognize basic RSA concepts, evaluate risk and safety, and become familiar with common issues, which gives the team the ability to conduct audits. Simple, low-cost safety improvements can be implemented to reduce fatalities and severe crashes. An optional, onsite RSA will be conducted at a predetermined, local site.

Call 352.273.1697 for pricing

8 hrs

CEU/PDH 0.8/8

Road Safety Audits for Local Governments

Target Audience: Traffic engineers and other local government decision makers

This class introduces Road Safety Audits (RSAs) as an effective tool to reduce injuries and fatalities on your road network through low-cost safety improvements. Learn basic RSA concepts, risk, safety, and common issues. Gain experience in conducting a RSA. An onsite RSA is conducted on day 2 at a predetermined, local site.

Call 352.273.1697 for pricing

16 hrs

CEU/PDH 1.2/12

Roadside Maintenance Safety

Target Audience: Mower tractor operators, and vegetation control workers

This course teaches OSHA standards, the fundamentals of safe mower use, traffic control procedures, PPE, sprayers, accident reviews and prevention, and vegetation control. This is not a hands-on equipment course.

\$120 Public • \$210 Private

5 hrs

Call 352.273.1685 for more information

Trenching and Excavation Safety — OSHA Standard **NEW!**

See Page 4 for more information.

Stormwater

Stormwater, Erosion, and Sedimentation Certification Program (npdes)

Target Audience: Persons responsible for planning and/or inspecting stormwater runoff and containment sites

This course satisfies the EPA regulations for qualified/certified inspectors for the Florida Stormwater, Erosion and Sedimentation Control Program and covers the Florida best management practices. To become a Certified Stormwater Management Inspector, participants must successfully complete the state-approved course and exam.

\$195 Public • \$295 Private

13 hrs

Call 352.273.1685 for more info

CEU/PDH 1.3/13

Surveying

Surveying Methods for Local Agencies

Target Audience: Individuals with limited to no surveying experience including engineers, supervisors, managers, state/local officials, road agency personnel, and others interested in learning simple surveying methods

This course covers basic surveying techniques using the hand level, rule (tape), and level rod. Participants learn how to record field measurement notes and use the notes to make simple calculations.

\$125 Public • \$210 Private

7 hrs

Call 352.273.1685 for more info

CEU/PDH 0.7/7



**University of Florida
Transportation Institute**

*Florida Transportation Technology
Transfer (T2) Center*

UNIVERSITY of FLORIDA

Workforce Development and Management

Between You and Me: Managing Conflict at Work

Target Audience: Your entire team

In today's workforce, some people are reluctant to get involved in a conflict situation. Who doesn't feel uncomfortable at the thought of an unpleasant and possibly emotional confrontation? Unfortunately, conflicts are rarely self-healing conditions. Learn how to take responsibility for resolving individual conflicts by following simple, effective steps.

Public \$125 • Private \$210

3 hrs

Call 352.273.1685 for more information

Coaching for Success

Target Audience: Supervisors and other leaders

Learn basic leadership skills to encourage/guide employees toward accomplishing goals in the work environment. Coaching is a dynamic, face-to-face leadership style. This intensive session provides practical tips on how to be a coach and become a better manager. Lectures, group discussion, and case study reviews cover techniques that can help you become a more effective leader.

\$125 Public • \$210 Private

3 hrs

Call 352.273.1685 for more information

Communicate Assertively

Target Audience: Supervisors, managers, office personnel, and engineers

Assertiveness is an acquired skill, not a personality trait that some people have and others do not. When we communicate assertively, we express our feelings, thoughts, and wishes, standing up for our legitimate rights without violating the rights of others. Learn communication skills that are essential in many day-to-day situations.

\$125 Public • \$210 Private

3 hrs

Call 352.273.1685 for more information

Communication Confidence

Target Audience: Supervisors, managers, office personnel, and engineers

Most of us think we are good communicators. Listening and talking are activities we engage in all the time, so we assume we do them well. Unfortunately, that is often not the case. Learn skills and tools to improve the way your team communicates.

\$125 Public • \$210 Private

3 hrs

Call 352.273.1685 for more information



Creating Possibilities

Target Audience: Supervisors, managers, office personnel, and engineers

Featuring the work of Ben Zander, world-famous conductor of the Boston Philharmonic Orchestra, this course offers a fresh approach for improving your leadership by encouraging you to become a possibility — a vision. The program expresses the importance of relating to people on your team as co-visionaries and co-leaders in the part they have to play.

\$125 Public • \$210 Private 3 hrs

Call 352.273.1685 for more information

Discover the Leader in You

Target Audience: Supervisors, managers, office personnel, and engineers

Packed with practical exercises, tools, checklists, and action plans, this course will help you identify specific leadership roles that are natural for you, most critical to your organization, and most difficult for you. Learn practical tools for developing your skills. Good managing and effective leadership are not about memorizing techniques; they are about the kind of capability that begins to feel like a natural part of your being.

\$125 Public • \$210 Private 3 hrs

Call 352.273.1685 for more information

Empowerment: Unleash Potential

Target Audience: Supervisors, managers, office personnel, and engineers

Want to maximize human potential? Create a culture that fosters independent initiative, creativity, and resourcefulness through proactive leadership. Identify proactive versus reactive behavior, increase your awareness of untapped potential, and develop an action plan to maximize potential in your work group.

\$125 Public • \$210 Private 3 hrs

Call 352.273.1685 for more information

From Manager to Motivator

Target Audience: Supervisors, managers, office personnel, and engineers

Inspiring employee motivation requires much more than the old-fashioned carrot-and-stick approach. Today's managers must understand the reasons why employees work and the rewards they hope to receive. Learn the many factors affecting employee motivation. If you lead others, this workshop is for you.

\$125 Public • \$210 Private 3 hrs

Call 352.273.1685 for more information

Leading the Challenge of Change

Target Audience: Supervisors, managers, office personnel, and engineers

In this world of high velocity change, we face the challenge of leading others through change every day. Why is guiding these transitions such a challenge? When people perceive that an established belief, value, or behavior is threatened, they experience fear — which then motivates them to protect themselves and resist the change! Explore the dynamics of change, the role of values and behavior in the change process, how to overcome resistance to change, and how to make change irresistible.

\$125 Public • \$210 Private 3 hrs

Call 352.273.1685 for more information

Making Meetings Work

Target Audience: Supervisors, staff, and engineers

How many meetings have you attended or conducted that seemed like wastes of time? Well, no more! Learn why meetings usually don't work, how to overcome typical meeting blunders, and how to conduct effective meetings.

\$125 Public • \$210 Private 3 hrs

Call 352.273.1685 for more information

Now Hear This

Target Audience: Supervisors, managers, office personnel, and engineers

Forty percent of your average workday is spent listening to others. That's close to half a day! Are you an effective listener? Assess your listening skills. Could you improve?

\$125 Public • \$210 Private 3 hrs

Call 352.273.1685 for more information

Power of Feedback

Target Audience: Your entire workforce

Whenever we respond to another person, we are giving feedback. Effective feedback clearly communicates what's expected. It avoids attacks, judgments, and name-calling, and uses reinforcement to point out positive behavior that can be repeated or redirected when an employee is not contributing toward the organization's goals.

\$125 Public • \$210 Private 3 hrs

Call 352.273.1685 for more information

Powerful Public Speaking

Target Audience: Upward bound employees, engineers, supervisors, and managers

Have you ever been in an interview, a meeting, or presentation and wished you were better prepared? Has stage fright impacted your effectiveness? Learn how to reduce stage fright and deliver your message in a professional manner. You will apply public speaking basics by focusing on situation, purpose, audience, and methods.

\$125 Public • \$210 Private 3 hrs

Call 352.273.1685 for more information

Quality Customer Service

Target Audience: Your entire workforce

We all have customers. How effective are you when dealing with them? When was the last time you really assessed your customer interaction? Could you improve? Would it help to review and get re-energized? This is not your ordinary customer service workshop.

\$125 Public • \$210 Private 3 hrs

Call 352.273.1685 for more information

Relationship Strategies

Target Audience: Upward bound staff, supervisors, and engineers

This demanding workshop offers guidelines for understanding and adjusting to differences in people through observation of their behavior. Tools presented enable you to see yourself and your world through someone else's eyes which increases communication effectiveness.

\$125 Public • \$210 Private 3 hrs

Call 352.273.1685 for more information

Successful Supervision in Public Works

Target Audience: Public works directors, engineers, supervisors, and superintendents

Improve the quality of supervision in your public works department. This class covers tasks related to human resources management (a responsibility for all public works supervisors), how the certification interview can be used to select supervisors with competencies in human resource management, evaluation of supervisory performance related to the management of human resources, and a training program to improve supervisory performance related to personnel management.

\$125 Public • \$210 Private 6 hrs

Call 352.273.1685 for more info CEU/PDH 0.6/6

Surviving the Challenge of the Problem Employee

Target Audience: Supervisors, managers, engineers, and office personnel

"Bill's work is not up to speed, but I'm afraid he's going to get angry if I tell him." "Mary does good work . . . when she actually comes to work." "The problem with Joe is his attitude. I just want to fire him!" In this workshop, supervisors will learn how to analyze and control problem employees and how to get the workplace back on track to productivity.

\$125 Public • \$210 Private 3 hrs

Call 352.273.1685 for more information

Teamwork: Together Everyone Wins

Target Audience: Team members, upward bound employees, engineers, supervisors, managers, and office personnel

Many organizations today use teams to identify and solve problems. Groups can transform themselves by learning the essential elements of team development.

\$125 Public • \$210 Private 3 hrs

Call 352.273.1685 for more information

What to Do First When Everything is Important

Target Audience: Supervisors, managers, office personnel, and engineers

"It takes too much time to plan. Besides, I've been successful so far without planning." "Everything I have to do is important." In today's work environment, supervisors often are bombarded with simply too much to do. While it is true that we don't have enough time to do it all, it is equally true that we do have enough time. The key is knowing what to do first. Learn how to control work environments and how to manage workloads.

\$125 Public • \$210 Private 3 hrs

Call 352.273.1685 for more information

Mobile Video Training

Target Audience: Field employees, entry level employees, and supervisors

This efficient video-based and instructor-led training delivers job-related skills information directly to your office, maintenance yard, or training facility. Schedule as much training in one day as possible (7 hours), and have the instructor travel to and from your site without an overnight stay. Including other agencies can save money and train the most employees at once. Average cost per training hour decreases as the total number of training hours increases. Custom-tailored training is available.

All training materials reflect Florida's regulations and guidelines. Sessions are scheduled on a first-come, first-served basis with a small registration fee that covers all employees. Your agency provides the meeting space and breaks.

Visit t2ctt.ce.ufl.edu and complete the Request Form, then submit as directed. Limited scholarships are available. For special training or questions, contact dkpage@ufl.edu or 352.273.1685.

Mobile Video Training Program Modules

1 – Work Zone Safety

- 1A. Rural Road Operations (4 hrs)
- 1B. Urban Streets (4 hrs)
- 1C. Combination of Rural Roads and Urban Streets (4 hrs)
- 1D. Detours (2 hrs)
- 1E. Flagging (2½ hrs)
- 1F. Intersection Work (2 hrs)
- 1G. Low Speed Streets (3 hrs)
- 1H. Moving/Mobile Operations (2 hrs)
- 1I. Pedestrians (2 hrs)
- 1J. Surveyors/Locators (2 hrs)
- 1K. Utility Work (2½ hrs)
- 1L. Nighttime Operations (2½ hrs)

Note: Modules 1D–1L are designed to be stand-alone training modules. When taught in combination with modules 1A, 1B, or 1C, modules 1D–1L will be treated as supplemental material, adding 30 to 45 minutes to training time.

2 – Asphalt Pavement

- 2A. Asphalt Pavement Repair (2 hrs)
- 2B. Asphalt Paving (1½ hrs)
- 2C. Asphalt Paving Inspection (1-2 hrs)
- 2D. Asphalt Surface Treatments (2 hrs)

3 – Equipment/Tool Operation and Safety

- 3A. Asphalt Paving Compaction Equipment Operation (2 hrs)
- 3B. Backhoe/Loader Operation (1½ hrs)
- 3C. Chainsaw Safety (1 hr)
- 3D. Commercial Driver's License (4 hrs)
- 3E. Crane Safety (1 hr)
- 3F. Crawler Excavator (Crawler Backhoe) Safety (1 hr)
- 3G. Dump Truck Operation and Preventive Maintenance (1 hr)
- 3H. Forklift Operation and Safety (1 hr)
- 3I. Front End Loader (2 hrs)
- 3J. Motor Grader (2 hrs)
- 3K. Skid Steer Loader (Bobcat) (2 hrs)

4 – Portland Cement Concrete

- 4A. Reinforced Portland Cement Concrete Inspection (4 hrs)
- 4B. Portland Cement Concrete Flatwork (2½ hrs)

5 – Roadside Maintenance Operations

- 5A. Mowing Safety (1 hr)
- 5B. Roadside Vegetation Control (4 hrs)
- 5C. Shoulder and Roadside Ditch Maintenance (2 hrs)
- 5D. Guardrail Installation (2½ hrs)

6 – Drainage Construction/Erosion Control

- 6A. Pipe Placement (1½ hrs)
- 6B. Underground Safety (2 hrs)

7 – Soils

- 7A. Soil Cement Construction in Florida (1½ hrs)
- 7B. Soil Stabilization in Clay Soils (1½ hrs)
- 7C. Geotextiles and Geogrids (2 hrs)
- 7D. Graded Road Maintenance (1-2 hrs)
- 7E. Erosion Control (2 hrs)

8 – Legal Concerns

- 8A. Legal Testimony — Trial and Deposition (2 hrs)
- 8B. Tort Liability — Field Responsibility (1 hr)
- 8C. Tort Liability — Management Responsibility (1-2 hrs)

9 – Highway Safety: Design, Construction and Maintenance

- 9A. Highway Safety Features (4 hrs)

10 – Traffic Operations

- 10A. Highway Signing and Pavement Marking Maintenance (4 hrs)

Turn the page for the November 2013 issue of the
Florida Technology Transfer Quarterly...

UF University of Florida Transportation Institute

Florida Transportation Technology Transfer (T2) Center
UNIVERSITY of FLORIDA



Contents

EDC Corner	22
UF Transportation Institute	23
Upcoming Courses	24
FDOT Research Reports	25
Media Center Listings	25
OPRC Update	26
Occupant Protection Success Story	26
Ped/Bike Resources	27

Drive Sober or Get Pulled Over National Crackdown

December 13–January 1

nhtsa.gov/StopImpairedDriving

EDC Corner

The EDC-Exchange is a regularly scheduled series of meetings which combine web-based presentations with in-person group participation. EDC Exchanges describe effective project development and delivery practices, tools and “market ready” technologies that local and tribal transportation agencies can readily implement into their programs. FHWA national subject matter experts, in conjunction with FHWA and State DOT field office experts, provide information and materials, and facilitate discussions designed specifically for the local/tribal transportation managers.

Visit www.fhwa.dot.gov/accelerating/everydaycounts/edc_exchange/local_tribal.cfm to see upcoming EDC Exchange topics and to view recordings of all previous Exchanges.

Also visit www.fhwa.dot.gov/everydaycounts to sign up to receive the free weekly EDC newsletter, which details innovation that is happening across the country.

Florida Technology Transfer Quarterly — Established 1984

Main Phone Number	352.392.2371
Workshop Registration	EXT. 31670
Workshop Development	EXT. 31685
Traffic Safety Courses	EXT. 31685
Pilot/Escort Program	EXT. 31670
CTQP Courses	EXT. 31669
Customer Service	EXT. 31674
Media Center	EXT. 31695
HfL Demonstration Showcases	EXT. 31697
Ped/Bike Safety Resource Center	EXT. 31680
Occupant Protection Resource Center	EXT. 31671
Mailing List	EXT. 31687
Fax	352.392.3224
Email	t2@ce.ufl.edu
Web	t2ctt.ce.ufl.edu

The Florida Technology Transfer Quarterly, published by the Florida Transportation Technology Transfer (T2) Center as part of the University of Florida Transportation Institute (UFTI) at the University of Florida, facilitates information exchange relating to roads, bridges, general surface transportation, and safety.

The T2 Center provides training, technical assistance, and technology transfer services through the following partnerships and programs:

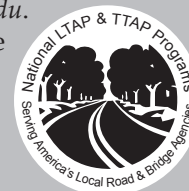
- Federal Highway Administration (FHWA)
- Florida Department of Transportation (FDOT)
- Local Technical Assistance Program (LTAP)
- Center for Transportation Training (CTT)
- Highways for LIFE (HfL) Demonstration Showcases
- Pedestrian and Bicycling Safety Resource Center (SRC)
- Florida Occupant Protection Resource Center (OPRC)

Interested parties may receive the electronic publication and annual printed portfolio by sending name, agency, mailing address, phone, and email to t2@ce.ufl.edu.

Newsletter content and accuracy is the exclusive responsibility of the Florida T2 Center.

UF UNIVERSITY of FLORIDA
The Foundation for The Gator Nation

**University of Florida
Transportation Institute**
Florida Transportation Technology
Transfer (T2) Center
UNIVERSITY of FLORIDA



University of Florida Establishes New Transportation Institute

The Florida T2 Center is now part of this new and exciting umbrella organization



What is UFTI?

On Friday, October 4, 2013, the University of Florida announced the formation of the new University of Florida Transportation Institute (UFTI) within the College of Engineering to serve as an umbrella organization housing several transportation-related centers. UFTI aims to advance the transportation state-of-the art, disseminate research results, and provide educational opportunities related to transportation across the lifespan. UFTI brings together faculty, staff, and students from many diverse backgrounds to provide solutions to a variety of transportation problems.

UFTI Launch Event

To celebrate the launch, UFTI held an event at the Reitz Union on the University of Florida campus in Gainesville, FL. The event included presentations by distinguished guests and faculty, a student research poster showcase, tours of research labs and facilities, and displays from student organizations. After introductions from Dr. Cammy Abernathy, Dean of the College of Engineering, and Professor Lily Elefteriadou, UFTI Director, expressing their vision for the institute, Tom Byron, chief engineer of the Florida Department of Transportation (FDOT), presented a summary of current transportation research and the FDOT/UF partnership. Professor Elefteriadou also addressed the audience with an overview of the new institute, followed by presentations from faculty and staff members associated with UFTI representing diverse areas such as traffic engineering, the Transportation Research Center, pavements, autonomous vehicles, technology transfer, and more.

What does the T2 Center bring to UFTI?

The T2 Center has a rich history of providing high level technology transfer and training activities to transportation agencies in the State of Florida. With a diverse training portfolio and the ability to disseminate information and technology both nationally and statewide, the T2 Center will partner with UFTI's other transportation-related centers and entities to promote research, expand training opportunities, and enhance current offerings with new and innovative information.

The T2 Center can link researchers working on new/ongoing research to its client base of real world partners, allowing research results to be put into practice more quickly and efficiently.

What does it mean for the future?

The T2 Center will continue to offer the same excellent level of service, training, and technical assistance as in the past. The UFTI will create a unified and recognizable brand and foster collaboration between the various transportation-related entities at UF.

Creating this direct link between the T2 Center and academia affords access to resources and technology not previously available. This connectivity means an expanded training portfolio, access to world-renowned transportation researchers, and a greater pool of resources to draw upon when you or your agency come to T2 with a specific need or issue.

Please visit transportation.institute.ufl.edu for more information about UFTI.

“The Florida T2 Center: Large enough to offer whatever is needed; small enough to personalize the delivery.”

▼ Nina Barker, T2 Center Interim Director, presenting the Center's activities and capabilities at the UFTI launch event.



Upcoming Workshops

Visit t2ctt.ce.ufl.edu to view the full course listings or to register for any of our sessions. For more information about T2 workshops, email t2workshops@ce.ufl.edu or call 352.273.1670. For CTQP courses, email ctt@ce.ufl.edu or call 352.273.1669. Please note that CTQP courses for January and February are primarily exclusive courses for public agencies. If you need training and do not see the specific course available, please call and give us an opportunity to arrange for your professional training requirements. We look forward to serving you.

ADA - Facilities Access

January 14, 2014	Orlando
January 15, 2014	Tampa
January 16, 2014	Gainesville

ADA/Accessibility Requirements for Highway Design and Pedestrians

January 14, 2014	Orlando
January 15, 2014	Tampa
January 16, 2014	Gainesville

Advanced Maintenance of Traffic

November 12-14, 2013	Milton
November 19-21, 2013	Tallahassee
December 10-12, 2013	Temple Terrace
December 17-19, 2013	Punta Gorda
January 15-17, 2014	Gainesville
January 15-17, 2014	Milton
January 15-17, 2014	Temple Terrace
January 29-31, 2014	Jacksonville
February 12-14, 2014	Orlando
February 25-26, 2014	Pompano Beach
February 26-28, 2014	Punta Gorda
March 12-14, 2014	Gainesville
March 25-27, 2014	Tampa
April 23-25, 2014	Jacksonville
May 7-8, 2014	Pompano Beach
May 20-22, 2014	Punta Gorda

Advanced MOT — Refresher

November 11, 2013	Pensacola
November 20, 2013	Pompano Beach
November 21, 2013	Tallahassee
December 12, 2013	Temple Terrace
December 19, 2013	Punta Gorda
January 14, 2014	Gainesville
January 14, 2014	Milton
January 14, 2014	Temple Terrace
January 28, 2014	Jacksonville
February 11, 2014	Orlando
February 25, 2014	Punta Gorda
March 11, 2014	Gainesville

March 19, 2014

March 24, 2014

April 22, 2014

May 7, 2014

May 19, 2014

May 21, 2014

Asphalt Paving Level 1

November 12, 2013

Asphalt Paving Level 2

November 13-15, 2013

Earthwork Construction Inspection Level 1

December 3-4, 2013

Earthwork Construction Inspection Level 2

December 5-6, 2013

Final Estimates Level 1

December 17, 2013

Intermediate Maintenance of Traffic

November 6-7, 2013

November 6-7, 2013

November 6-7, 2013

November 13-14, 2013

November 19-20, 2013

December 4-5, 2013

December 4-5, 2013

December 10-11, 2013

December 11-12, 2013

December 11-12, 2013

December 18-19, 2013

January 22-23, 2014

January 29-30, 2014

February 5-6, 2014

February 5-6, 2014

February 12-13, 2014

February 12-13, 2014

March 4-5, 2014

Pompano Beach

Tampa

Jacksonville

Orlando

Punta Gorda

Pompano Beach

Gainesville

Gainesville

Gainesville

Gainesville

Gainesville

Orlando

Palm Coast

Panama City

Punta Gorda

Sarasota

Milton

Tallahassee

Pompano Beach

Fort Myers

Gainesville

Temple Terrace

Pompano Beach

Punta Gorda

Gainesville

Tampa

Jacksonville

Tallahassee

Orlando

March 12-13, 2014

March 26-27, 2014

April 9-10, 2014

April 9-10, 2014

April 16-17, 2014

April 16-17, 2014

May 15-16, 2014

Intermediate MOT — Refresher

November 12, 2013

December 3, 2013

December 3, 2013

December 4, 2013

December 10, 2013

December 10, 2013

December 17, 2013

January 21, 2014

January 28, 2014

February 4, 2014

February 4, 2014

February 11, 2014

February 11, 2014

March 3, 2014

March 11, 2014

March 25, 2014

April 8, 2014

April 8, 2014

April 15, 2014

April 15, 2014

May 14, 2014

Pilot/Escort Flagging

November 7, 2013

December 5, 2013

December 11, 2013

December 17, 2013

Temporary Traffic Control Plan Selection Software

November 14, 2013

Milton

Punta Gorda

Gainesville

Tallahassee

Pompano Beach

Temple Terrace

Jacksonville

Punta Gorda

Milton

Tallahassee

Pompano Beach

Fort Myers

Gainesville

Temple Terrace

Pompano Beach

Punta Gorda

Gainesville

Tampa

Jacksonville

Tallahassee

Orlando

Milton

Punta Gorda

Gainesville

Tallahassee

Pompano Beach

Temple Terrace

Jacksonville

Gainesville

Gainesville

Panama City

Orlando

Gainesville



University of Florida Transportation Institute

Florida Transportation Technology Transfer (T2) Center

UNIVERSITY of FLORIDA

December is National Drunk & Drugged Driving Prevention (3D) Month

nhtsa.gov/StopImpairedDriving

FDOT Summary of Final Research Reports New topics available!

Access dot.state.fl.us/research-center for these summaries and final reports. Go to the Research Center Topics drop-down menu in the lower left corner of the page and click on Completed Research. Summaries are listed by category.

Materials

- Evaluation of Warning Lights on Maintenance of Traffic Devices and Development of Possible Alternatives (BDR74 977-01)

Materials

- Assessment of Potential Concerns Associated with the Use of Cement Kiln Dust in FDOT Concrete Mixes (BDK75 977-50)
- Evaluation of New Binders Using Newly Developed Fracture Energy Test (BDK75 977-75)
- Performance of High Performance Concrete (HPC) in Low pH and Sulfate Environments (BDK80 977-16)
- Use of Aggregate Imaging Measurement System (AIMS) to Evaluate Aggregate Polishing in Friction Surfaces (BDK75 977-44)
- Use of Scanning Electron Microscopy and Microanalysis to Determine Chloride Content of Concrete and Raw Materials (BDK75 977-15)

Planning

- Development of a Geographic Information System (GIS) Tool for the Preliminary Assessment of the Effects of Predicted Sea Level and Tidal Change on Transportation Infrastructure (BDK75 977-63)
- Incorporation of State-of-the-Art Integrated Modeling Methodologies into Florida's Statewide Model (BC209)
- Florida Model Information eXchange System (MIXS) (BDK75 977-55)

Public Transportation

- A Qualitative Analysis of Bus Simulator Training on Transit Incidents - A Case Study in Florida (BDK85 977-07)
- A Tool for Assessing Economic Impacts of Public Transit Spending (BDK85 977-36)
- Flexible Public Transportation Services in Florida (BDK85 977-37)
- Project UCARE: Uniform Cost Accounting and Reporting Elements for Transportation Demand Management Programs (BDK85 977-22)
- Ridership Impacts of South Florida's EASY Smart Card, Summary (BDK85 977-42)

Safety

- Aging Road User, Bicyclist, and Pedestrian Safety: Human Factors Studies Phase 3, Effective Bicycling Signs and Preventing Left-turn Crashes (BDK83 977-15)

Structures

- Bridge Girder Drag Coefficients and Wind-Related Bracing Recommendations (BDK75 977-33)

Traffic Engineering and Operations

- Analysis of Prospective Systems for Fog (Fog Operational Guidance) Warnings (BDK83 977-19)

New at the T2 Media Center Below is a sample of new items added to the Media Center collection since the last newsletter. Visit t2ctt.ce.ufl.edu/t2ctt/T2_Media_Center.asp to view all new listings.

As always, any non-copyrighted publication can be printed and checked out to you upon request. Visit the website, call 352.273.1695, or email mediacenter@ce.ufl.edu for more information.

- | | |
|---|---|
| <ul style="list-style-type: none"> • How to Increase Bicycling for Daily Travel • Development of a Simple Test to Determine the Low Temperature Strength of Asphalt Mixtures and Binders • Pedestrian and Bicyclist Warning Devices and Signs at Highway-Rail and Pathway-Rail Grade Crossing • Traffic Enforcement Strategies for Work Zones • Developing Partnerships between Transportation Agencies and the Disability and Underrepresented Communities • Strategic Plan to Optimize the Management of Right-of-Way Parcel and Utility Information at the Florida Department of Transportation • An Evaluation of the Effectiveness of Voice-to-Text Programs at Reducing Incidences of Distracted Driving • Evaluation of Various Pavement Fabric and Mat Applications to Retard Reflective Cracking | <ul style="list-style-type: none"> • Quality Control/Quality Assurance Testing for Joint Density and Segregation of Asphalt Mixtures • Worker Safety in Very Short Duration Work Zone Operations: State of Practice and Risk Management Process • Energy Analysis of Vehicle-to-Cable Barrier Impacts • Analyzing Driver Behavior Using Data from the SHRP 2 Naturalistic Driving Study • Renewable Energy Guide for Highway Maintenance Facilities • Injury Vulnerability and Effectiveness of Occupant Protection Technologies for Older Occupants and Women • A Qualitative Analysis of Bus Simulator Training on Transit Incidents: A Case Study in Florida • Energy Savings Strategies for Transit Agencies • Evaluation of Wet-Nighttime Delineation |
|---|---|

Occupant Protection Resource Center (OPRC) Update

Gaining knowledge and experience to better promote occupant protection in Florida

The OPRC started off the new grant year on October 4, 2013, and we have big plans for the year. New promotional items and new car seats are being ordered and will be available soon.

Scholarships are available from Safe Kids to pay for CPS technician or instructor certification and recertification fees. Instructors can apply through the online Technician scholarship form, and put "instructor candidacy" or "instructor recert" in the course ID section. See the Safe Kids website for certification information on becoming a technician or instructor, then apply to the OPRC if you are in need of payment assistance via this scholarship.

Below is a list of items currently available to order at no charge through the Promotional Items portion of the website. Visit the website to order, and be sure to check the Printable Resources page (under the Links section), which features a constantly updated list of items you can download and print right from the site. The OPRC would love to hear from you about improvements that can be made to serve you better. Please email floridaoprc@ce.ufl.edu or call 352.273.1671 to provide your valued input.

Website: floridaoprc.ce.ufl.edu

Facebook: [facebook.com/FloridaOPRC](https://www.facebook.com/FloridaOPRC)

Stickers

- Be Safe, Buckle Up — 5-point Harness (English)
- Be Safe, Buckle Up — In a Booster *E/S
- Be Safe, Buckle Up — Moose *E/S

Tattoos

- Be Safe, Buckle Up
- Pre-teen Car Safety

Other Fun Stuff

- Lifemeters
- Magnet with OPRC logo
- MyCue

DVDs

- I'm Safe! in the Car
- 2012 Child Restraint Manufacturers' Instructions with Summary Sheets *I/T
- Simple Steps to Child Passenger Safety (Living Legacy) *I/T

Publications

- Spanish Flip Book *I/T
- The LATCH Manual, 2011 Edition *I/T

*E/S — Available in English and Spanish

*I/T — Available to CPS Instructors and Technicians only



www.floridaoprc.ce.ufl.edu

Occupant Protection Success Story!

Properly secured and appropriately sized car seats really do save lives!

Earlier in 2013, Alonna Hitchcock obtained a new car seat for her son from a local CPS program and was very thankful for it. Alonna had her son, Dawson (age 3), fitted for a Diono Radian, one of the car seats made available to CPS Instructors and Technicians across the state through the OPRC. Dawson was fitted just in time, as he was in a crash just days later. Dawson's grandfather was driving at 50 mph when another driver pulled out in front of him, and he was going approximately 45 mph when the cars crashed. Luckily, everyone in Dawson's car was buckled in, and even though everyone was safe after the collision, one of the adults sustained a fractured collarbone, and one had facial bruising/lacerations because the shoulder part of her seatbelt was tucked behind her and she hit the seat in front of her. Dawson survived the crash unscathed, however, thanks to his new car seat, which was equipped with a 5-point harness.

Ginny Hinton, the CPS Instructor who fitted Dawson in the seat, was grateful she had the seat to provide. The OPRC provides Florida CPS-certified Instructors and Technicians, like Ginny, with car seats, as well as materials and information, to support their car seat program.

"I just wanted to thank [the OPRC] for introducing me to the importance of car seat safety," Alonna wrote. "There is not

a doubt in my mind that he would have been seriously injured had he not been properly secured in a safely secured car seat. I cannot stress how grateful I am that I had that car seat and that I was educated about how to properly secure Dawson in it. Also, I would have never been able to afford such a safe seat without the help of you and this program. Thank you so much!"

Take a note from Dawson and be sure that everyone in your vehicle is wearing the appropriate safety restraint!



► Dawson's car after the crash.

Florida's Pedestrian and Bicycling Safety Resource Center

Supplying materials to make your safety event successful

Make your ped/bike events and educational activities more successful by providing items that reinforce safe walking and bicycling practices. Items listed below are available at no charge to qualifying Florida organizations. Visit pedbikesrc.ce.ufl.edu for descriptions, illustrations, and ordering information.



"Slow Down" Safety Signs

- Bike Boy
- Roller Girl
- Soccer Girl
- Skateboard Boy

Books

- Bicycle Safety
- Cycling Skills Clinic Guide
- Florida Pedestrian Law Enforcement Guide
- Florida Bicycling Street Smarts **NEW!**
- Sprocketman Comic Book

Bookmarks

- I'm A Safe Walker
- Wear Your Helmet
- You Can't Stop a Train
- Top Ten Rules **NEW!**

Coloring Books

- Safety Fun (Spanish)
- Traffic Safety
- Practice Bike Safety
- I'm Safe on My Bike
- I'm a Safe Walker

Stickers

- Use Your Head (Dog) (Bilingual)
- Use Your Head (Moose)
- Walk Safely!
- Walking School Bus

Tattoos

- I'm Safe – Think Before You Step
- I'm Safe – Be Safe! Wear a Helmet
- I'm Safe – Think B4 You Step
- I'm Safe – Use Your Brain! Wear a Helmet!

Reflective

- School Bus Zipper Pull
- Bike, Walk, Run Spoke Sliders

Other Fun Stuff

- Eraselets (Erasing bracelet)
- SRTS Pedometer
- 4-Pack Crayola Crayons
- Be Safe Be Seen Mood Pencils

Brochures

- A Kid's Guide to Safe Walking
- Crosswalk Safety *E/S
- Easy Steps to Properly Fit a Bicycle Helmet
- EL EQUIPO ADECUADO
- Getting to School Safely
- Kids Physical Activity *E/S
- Know the Rules – Going To & From School *E/S
- Neighborhood Safety *E/S
- Parent's Guide
- PEATÓ & PONGA ATENCIÓN...
- Prevent Pedestrian Crashes
- Tips for Parents and Other Adults for Teaching Pedestrian Safety to Children *E/S
- Tips for Walking Safely to School (Spanish)

Activity Sheets

- Bike Riding Dangers
- I'm Safe! Paint Sheet – Bike *E/S
- I'm Safe! Paint Sheet – Walk *E/S
- Paul's A-Maze-ing Trip
- Sara and Her Bike
- Secret Code
- Walk 'n Roll Punch Cards
- What's Wrong with This Picture?

CDs

- Safer Journey
- Walk Smart & Bike Smart

DVDs

- Walk to School – Safe is Cool
- Courtesy Promotes Safety
- Disney Safety Hits Vol. 1
- Disney Safety Hits Vol. 2 (LOAN)
- Florida School Crossing Guard Training Program
- I'm Safe – On Wheels
- I'm Safe – Walk with Me
- Jello in a Jar
- Middle School Helmet Safety Program
- Pedestrian Law Enforcement Training
- Professor Helmut on Helmets
- Ride Smart: It's Time to Start
- Slow Down/Pay Up or Crash



Posters

- Be Safe Be Bright, Retro Reflectivity
- Hispanic Pedestrian Poster: Crosswalk and Signals
- Hispanic Pedestrian Poster: Caution
- Hispanic Pedestrian Poster: Sidewalks
- Hispanic Bicycling Poster
- Are You A Safe Walker?
- I'm Safe On My Bike

*E/S: Available in English and Spanish





University of Florida Transportation Institute

Florida Transportation Technology Transfer (T2) Center

UNIVERSITY of FLORIDA

2100 NE Waldo Road, Suite 106
Gainesville, FL 32609

Non-profit Organization
U.S. Postage
PAID
Gainesville, FL
Permit No. 94

Want to stop or start receiving the Annual Portfolio by mail?

As you may know, the T2 Center went green and began distributing the Florida Technology Transfer Quarterly by email in February 2013. As this portfolio is our only mailed copy, we want to ensure our records are as updated as possible so we can best serve you! Please contact us if this copy is a duplicate, is for someone who is no longer with your agency, or if you would like to receive your own copy of this portfolio.

Would you like to receive the Quarterly and E-Newsletter by email?

You can also sign up to receive our E-Newsletter (6 to 10 issues per year), which includes links to timely and pertinent information about topics such as upcoming events and webinars, pedestrian and bicycling safety, stormwater and erosion control, roadway and work zone safety, distracted driving, traffic, transportation, aggregates, and more!

Contact us today at t2@ce.ufl.edu or 352.273.1687.